



PROJECT		REF		REV	ITEM CODE	
LOCATION		DATE			PAGE	

SANITARY WARE SPECIFICATION SHEET

Item Descriptions	<p>American Standard (PRC) "EasySET" Innovative exposed push button thermostatic shower mixer with adjustable flow rate, life cycle >300,000 times & swivel bath spout to provide the space flexibility and ease of use; German thermostatic cartridge; anti-scald safestop button; chrome plated shower head and 3 functions hand spray with instinctive button for switching between spray modes; PVC silver twist-free shower hose; built-in two side hooks; nominated flow rate 7.4 & 8.1 L/min in WELS Grade 1; Registration No. SB 17-0023 & SB 19-0117</p>	<p style="text-align: center;">Illustration/ Drawing</p>												
Model	FFAS4956-601500BC0													
Finish / Material	Chrome Plated / Brass													
Manufacturer	American Standard (PRC)													
Supplier	Acme Sanitary Ware Co. Ltd Mr. Eric Wong/ Mr. Don Yuen													
Contact Tel/Fax	(852) 2388-7171 / (852) 2710-8012													
E-mail	acme@acmesanitary.com.hk													
Website	www.acmesanitary.com.hk													
FEATURES	<ul style="list-style-type: none"> • German thermostatic cartridge • Anti-scald safestop button • Push button cartridge with flow rate adjustable from Japan, lifecycle ≥ 300,000 times • Plastic body with cool touch design, no risk of scalding on the body • Designed with a shelf space for storage function • Side Hook on both side, as a shower accessories and drain the water on the top of Casting brass spout, rotate to divert the water to hand shower and spout • 3-functions Rain Click hand shower, instinctive button for switching between spray modes • PVC Silver twist-free shower hose • With easy glide shower holder • With normal packaging • 307*189 rectangle head shower, with air-in function 													
PUSH	<p>Imagine a rejuvenating shower experience as intuitive and simple as breathing. From the cascading water from the Rainshower to the invigorating Hand Shower, all activated individually with a simple push of a button.</p>													
TURN	<p>Be in total control of both the temperature and volume of the water to create your own perfect shower. Choose a stronger flow of water to ease muscle tensions or a more sensuous flow for that relaxing spa-like pampering. All with an easy turn of the dial.</p>													
Hand Shower	<table border="1"> <tr> <td>Dynamic flow pressure (kPa)</td> <td>50</td> <td>150</td> <td>250</td> <td>350</td> <td>500</td> </tr> <tr> <td>Flow rate (l/min)</td> <td>2.53</td> <td>5.33</td> <td>6.88</td> <td>7.55</td> <td>8.30</td> </tr> </table>	Dynamic flow pressure (kPa)	50	150	250	350	500	Flow rate (l/min)	2.53	5.33	6.88	7.55	8.30	
Dynamic flow pressure (kPa)	50	150	250	350	500									
Flow rate (l/min)	2.53	5.33	6.88	7.55	8.30									

* All information of the above is for the reference only. No prior notice is made if any changes.



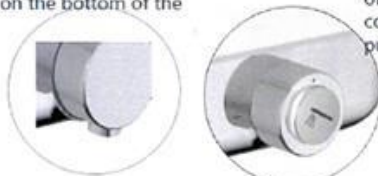
PROJECT		REF		REV	ITEM CODE	
LOCATION		DATE			PAGE	

SANITARY WARE SPECIFICATION SHEET

American Standard

SafeStop button

- Limits temperature selection at 38°C, depress button to select higher temperature
- Button is located on the bottom of the handle



Push & Turn

- Dial adjusts water volume easily and offers daily convenience at the push of a button

Side Hook

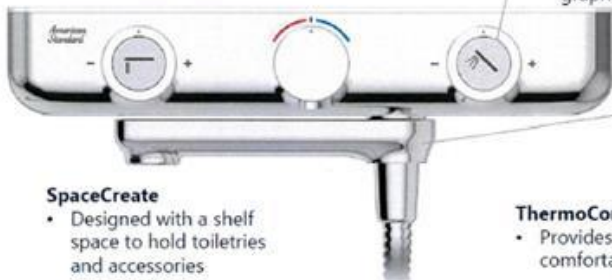
- Use to hang shower accessories and drain the water on the top of the surface
- Load up to 1.5 KG

Cool Surface (CoolShield)

- No risk of scalding on the body

Intuitive Graphics

- improved intuitive graphics on the buttons



SpaceCreate

- Designed with a shelf space to hold toiletries and accessories

ThermoComfort

- Provides a constant and comfortable temperature.

Swivel Spout

- Space Saving so that minimize the space required

ThermoSafe

- Safety temperature control up to 49°C, with an auto shut-off function when cold water supply fails.



EASYGLIDE

No more fumbling moments with the hand shower holder that allows you to adjust its height in just one fluid twist-and-go movement.

Small in Details.
Big on Function.

AIRNEGIZE

Thanks to our thoughtful Airnegize technology that infuses water droplets with air, you will be wrapped in a luxurious shower spray while using lesser water.

Note:

* All information of the above is for the reference only. No prior notice is made if any changes.



PROJECT		REF		REV	ITEM CODE	
LOCATION		DATE			PAGE	

SANITARY WARE SPECIFICATION SHEET

 <p>PUSH & TURN Dial adjusts water volume easily and offers daily convenience at the push of a button.</p>	 <p>EASYCLICK An instinctive button for switching between spray modes.</p>
 <p>THERMOCOMFORT Provides a constant and comfortable temperature.</p>	 <p>SPACECREATE Creates extra usable space in the bathroom.</p>
 <p>EASYGLIDE Hand shower holder that allows you to easily adjust its height, single-handedly.</p>	 <p>SWIVEL 360° 360° spout provides space flexibility and ease of use.</p>
 <p>THERMOSAFE Safety temperature control up to 49°C, with an auto shut-off function when cold water supply fails.</p>	 <p>AIRNERGIZE Air-infused water provides a luxurious shower experience while using lesser water.</p>
	 <p>COOLSHIELD Body of faucet stays cool and prevents scalding shocks.</p>



Note:

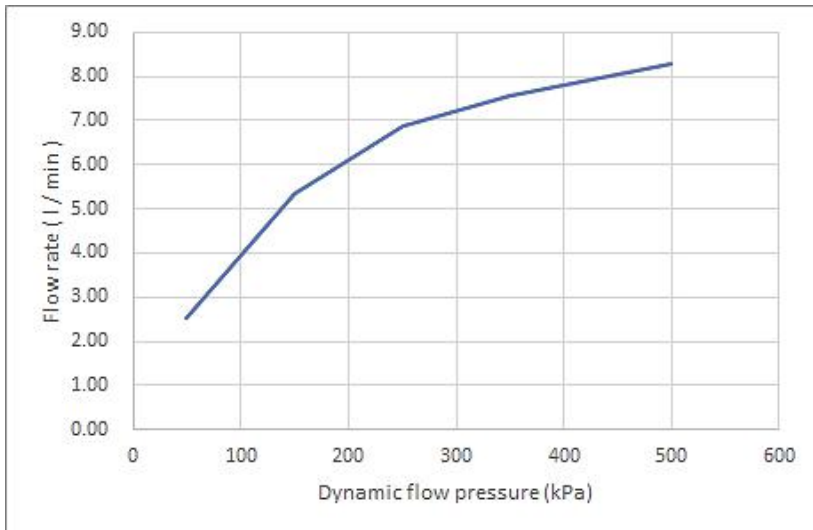
* All information of the above is for the reference only. No prior notice is made if any changes.



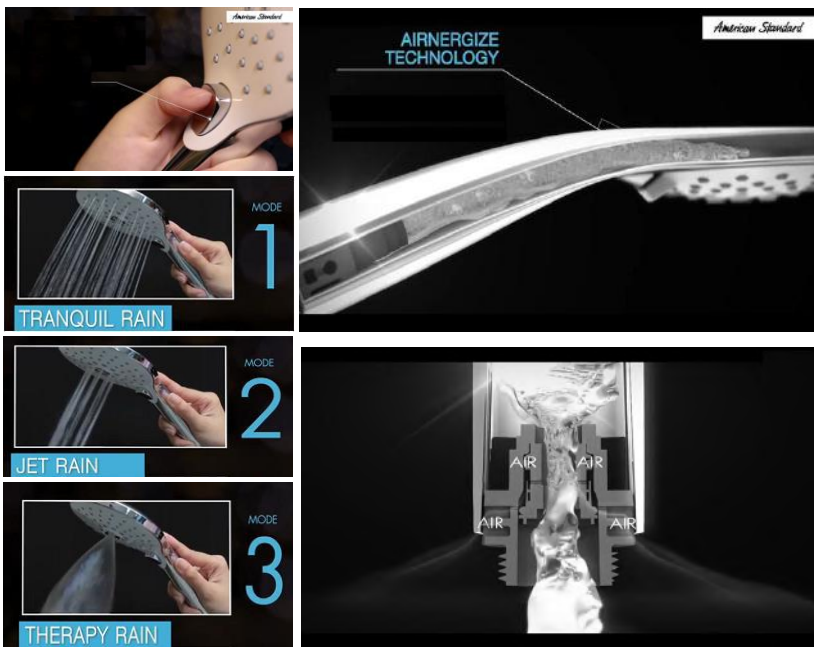
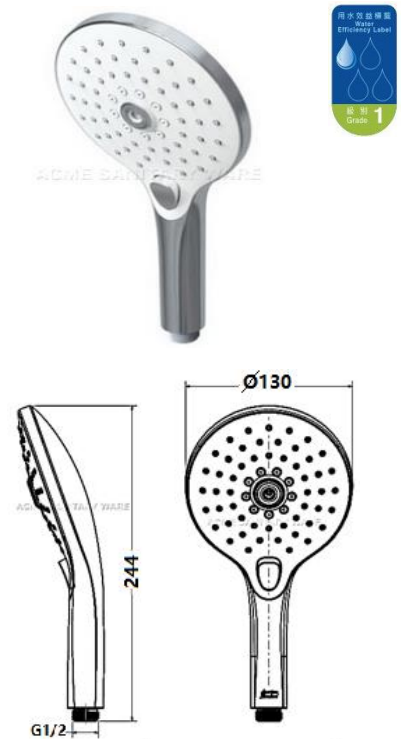
PROJECT		REF		REV	ITEM CODE	
LOCATION		DATE			PAGE	

SANITARY WARE SPECIFICATION SHEET

Hand Shower



Dynamic flow pressure (kPa)	50	150	250	350	500
Flow rate (l/min)	2.53	5.33	6.88	7.55	8.30



EASYCLICK

With a simple push of a button, you can easily switch between 3 spray functions for an indulgent shower of your choice.

<https://www.youtube.com/watch?v=SLncQdPEw6s>

* All information of the above is for the reference only. No prior notice is made if any changes.

註冊號碼 (Registration No.): SB 17-0023




自願參與用水效益標籤計劃 - 沐浴花灑
Voluntary Water Efficiency Labelling Scheme - Showers for Bathing



茲證明
This is to certify that

將下列花灑在本計劃內註冊：
has registered the following shower under this scheme :

牌子 / Brand	:	American Standard
型號 / Model	:	FFAS9H11-000500BC0
原產地 / Country or Region Origin	:	China

在用水效益標籤上展示的標誌 <i>Symbolic Presentation on the Water Efficiency Label</i>	:	 滴水點 <i>Water droplet(s)</i>
用水效益級別 <i>Water Efficiency Grade</i>	:	1
耗水量 <i>Water Consumption</i>	:	6.6 公升/分鐘 <i>litres/minute</i>

簽發日期:
Date of Issue: 28 August 2017

 水務署
Water Supplies Department



水務署署長(周世威代行)
for Director of Water Supplies




自願參與用水效益標籤計劃 - 沐浴花灑
Voluntary Water Efficiency Labelling Scheme - Showers for Bathing



茲證明
This is to certify that

將下列花灑在本計劃內註冊：
has registered the following shower under this scheme :

牌子 / Brand	:	American Standard
型號 / Model	:	FF1-CN521H0005650P
原產地 / Country or Region Origin	:	China

在用水效益標籤上展示的標誌 <i>Symbolic Presentation on the Water Efficiency Label</i>	:	 滴水點 <i>Water droplet(s)</i>
用水效益級別 <i>Water Efficiency Grade</i>	:	1
耗水量 <i>Water Consumption</i>	:	8.1 公升/分鐘 <i>litres/minute</i>

簽發日期:
Date of Issue: 27 December 2019



水務署署長(張業駒代行)
for Director of Water Supplies



水務署
Water Supplies Department

總部 Headquarters

香港灣仔告士打道七號入境事務大樓 48 樓

Immigration Tower, 7 Gloucester Road, Wan Chai, Hong Kong

本署
Our
來函
Your re,



3321/2021 T/J(926/2021)

電話
Tel.
傳真
Fax.

: 2824 0578

30 August 2021



**Approval of “AMERICAN STANDARD” Thermostatic Mixer
(General Acceptance No. C20210990)**

Your letters ref. WRC/2380 and C-WSD/0834 dated 31 May 2021 and 11 August 2021 respectively refer.

Having considered the test report ref. J25753r2 issued on 9 July 2021 by Nutek Systems (HK) Ltd., this Authority accepts that the fitting described below complies with, and its use when correctly installed does not contravene, the Waterworks Ordinance and Regulations.

Name of Manufacturer: Jiangmen LIXIL AS Sanitary Fitting Manufacturing Co Ltd

Country of Origin: the Mainland of China

Brand: American Standard

Details of Fitting: 1/2" Thermostatic bath and shower mixer

Model: FFAS4956-601500BC0

Body Markings: *American Standard*

Expiry Date: 26 October 2025



This Authority hereby permits the use of the above fitting in fresh water plumbing systems subject to full adherence to Waterworks installation requirements. In particular, you are required to draw your customers' attention to the following requirement-

"The cold water supply to the fitting shall be drawn from the same source that supplies the hot water apparatus so as to provide a balanced pressure and to obviate the risk of scalding in the event of a restriction or failure in the water supply." AND

"The shower head or handspray should not be placed in submerged conditions and should be securely fixed to the original position after use."

A condition of this acceptance is that the fitting to be installed shall be replicas of the sample as certified by the testing agent mentioned above and without modifications. This acceptance may be withdrawn at any time if the standard of the fitting installed fails to meet that of the approved sample or if the fitting is found to be unsuitable for use in fresh water plumbing systems.

This acceptance is only applicable to the main body of the fitting, unless otherwise specified.

For the use of the fitting in any project, the General Acceptance Number of this letter must be quoted as a means of identification of acceptance of the fitting by this Authority.

Should you have any enquiries, please contact our Engineer Mr. Terry KUNG at tel. no. 3583 4086.

Yours faithfully,



(Roger WONG)
for Director of Water Supplies

Encl.

c.c. WSD 3321/1/82] - without catalogue
ME/MC] - with soft copy only